

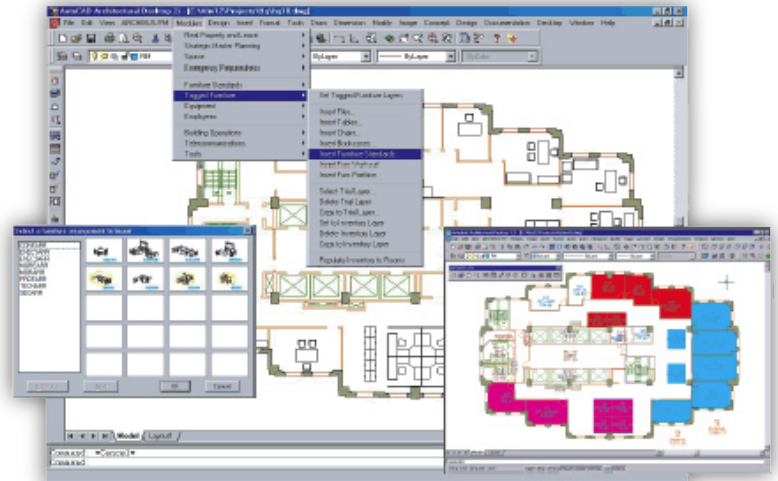
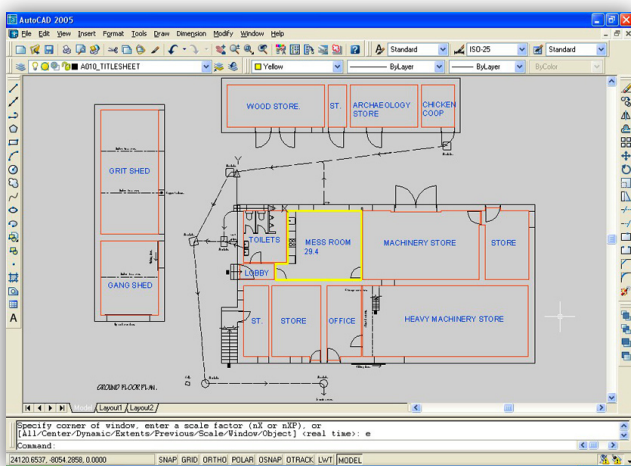


ArchibusLink™

Cad-Capture has developed a unique interface ArchibusLink for users of Archibus/FM Facilities Management System who wish to integrate CAD floor plans with the system. ArchibusLink enhances the functionality and usefulness of the system and saves time populating and maintaining databases.

Intelligent CAD files produced using Cad-Capture's AssetCapture solution are automatically linked so that the information within the Archibus/FM database is related to graphical objects in the drawing such as room area polygons and room text.

Furthermore ArchibusLink seamlessly generates Archibus/FM data transfer files in Excel or XML format so that property records can be populated automatically from the intelligent CAD files with minimal input from the user.



ArchibusLink seamlessly generates room data information files so that property records can be populated automatically from the intelligent CAD files with minimal input from the user