



# CaptureLink for AutoCAD™

## Drawing Management for Open Text eDOCS DM

### KEY FEATURES & BENEFITS

**Increases productivity** by providing faster access to drawings, speeding up document production, and minimising time spent searching for or recreating information.

**Improves decision-making** by enabling access to all types of document across the organisation, enhancing the corporate knowledge base.

**Maintains integrity and consistency** by validating title blocks with eDOCS metadata and maintaining version and audit information.

**Transforms the availability of information** by capturing text and metadata from inside drawings and making it available on enterprise-wide queries, helping users find relevant information whenever and wherever needed.

**CaptureLink works with** AutoCAD 2009, 2010, 2011, 2012 AutoCAD Raster Design 2010, 2011, 2012 (32bit/64bit)

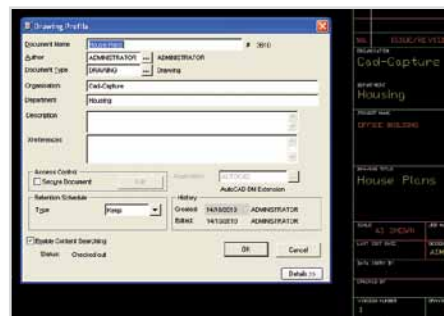
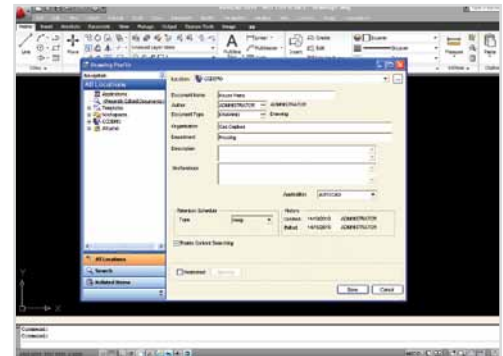
**CaptureLink integrates with** Open Text eDOCS DM versions 5.2.1, 5.3, 6.04 and 6.05



**Autodesk®**  
Authorised Developer

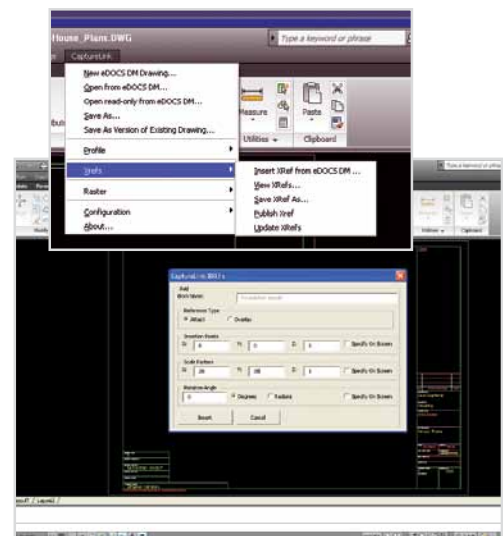
### Available from Open Text as eDOCS DM Integration to Autodesk AutoCAD

CaptureLink for AutoCAD from Cad-Capture brings true Open Text eDOCS DM integration to Autodesk's AutoCAD suite of CAD design software. It enables drawings and their associated content such as Xrefs and rasters to be stored into, managed within and retrieved from eDOCS directly from the AutoCAD application, helping maintain consistency across an organisation, facilitating better decision making and improved productivity.



**eDOCS profile/title block synchronisation**  
Automatically synchronise eDOCS DM profile and version attributes with drawing title block data for efficient and error-free profiling. This is completely configurable, complying with existing business and drawing management processes. DM profile and title block mappings can be configured between multiple DM profiles and title blocks.

**Xref management**  
Ensure complete control of drawing content by storing Xrefs and inserted images in the eDOCS repository, and managing with CaptureLink for AutoCAD. Published, current or specific versions of Xrefs can be inserted in drawings; new versions are checked for when the drawing is opened in CaptureLink, and updated Xrefs loaded if necessary.



**Content searching**  
Allow users to search on drawing content including text within blocks. When drawings are saved in CaptureLink all text content is extracted and indexed by eDOCS.

# CaptureLink for AutoCAD™

Drawing Management for Open Text eDOCS DM



**CaptureLink is also available for**  
Bentley MicroStation

## Cad-Capture's portfolio includes

CaptureVue (Office, 2D and 3D)  
CaptureVue HotSpots  
CaptureVue Print Server  
CaptureLink for AutoCAD  
CaptureLink for MicroStation  
CaptureTransmit  
CaptureTag  
CaptureNet  
Bulk Migration Tools for eDOCS DM

## Integrated drawing management for eDOCS across sectors including

Oil & Gas  
Architectural  
Engineering  
Construction  
Utilities  
Local Government  
Power Generation  
Manufacturing

**Available as an upgrade for**  
existing users of DM Extensions  
for AutoCAD as part of an active  
maintenance agreement

## For more information:

### CAD-CAPTURE

t: +44 (0) 1254 504400  
e: [software@cadcap.co.uk](mailto:software@cadcap.co.uk)  
w: [www.cadcap.com](http://www.cadcap.com)

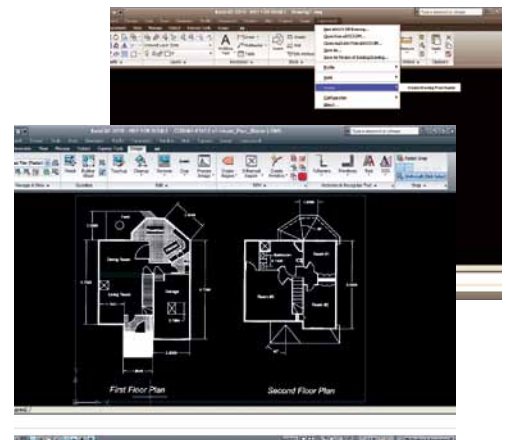
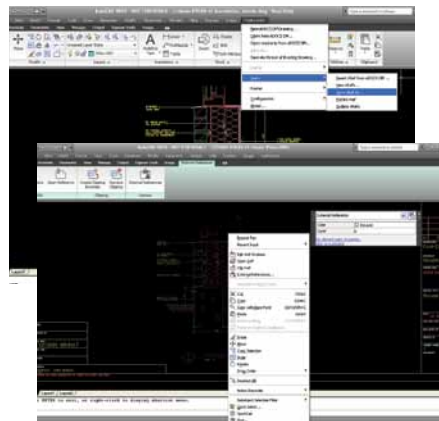


## CAD-CAPTURE



## Hybrid drawings

For organisations working with hybrid drawings, CaptureLink for AutoCAD Raster Design provides the ability to create a new AutoCAD drawing by automatically inserting the raster image, and for both the raster and drawing portions to be edited, updated and saved in eDOCS.



## Editing Xrefs

Make full use of the Xref editing capabilities in more recent versions of AutoCAD by opening and editing Xrefs from within the master drawing. CaptureLink ensures integrity with eDOCS is maintained, checking-out Xrefs so they can be modified, and then checking-in saved changes when the work is complete.

## Contractor drawings

When drawings are modified outside the eDOCS environment, for example by contractors, CaptureLink for AutoCAD can be used to confirm the required changes, and then to save the returned drawing as a new version of the existing drawing in eDOCS.

## Language options

Available in English and Norwegian. Translation to other languages available on request.

## Compatibility with Open Text eDOCS DM Extension for AutoCAD

Capitalise on your previous investment in Open Text by upgrading existing eDOCS DM Extension for AutoCAD licences\* to CaptureLink for AutoCAD. CaptureLink is now available directly from Open Text as eDOCS DM Integration to Autodesk AutoCAD.

\* *subject to current Open Text maintenance contract*

## A complete solution

Cad-Capture provides a range of innovative solutions for Open Text integration and enhancement. CaptureVue provides multi-format viewing, mark-up and collaboration from within eDOCS. This means that you can manage all your drawings within eDOCS, and then distribute them to a wider audience without the need for additional installations of AutoCAD or other drawing viewers.

[www.cadcap.com/capturelink-for-autocad](http://www.cadcap.com/capturelink-for-autocad)

+44 (0) 1254 504400  
[software@cadcap.co.uk](mailto:software@cadcap.co.uk)  
[www.cadcap.com](http://www.cadcap.com)

CAD-CAPTURE, Barnfield House, Accrington Road, Blackburn, Lancashire, England, BB1 3NY

**CAD-CAPTURE**  
the data management experts

Copyright © CAD-CAPTURE