



# CIPFALink™

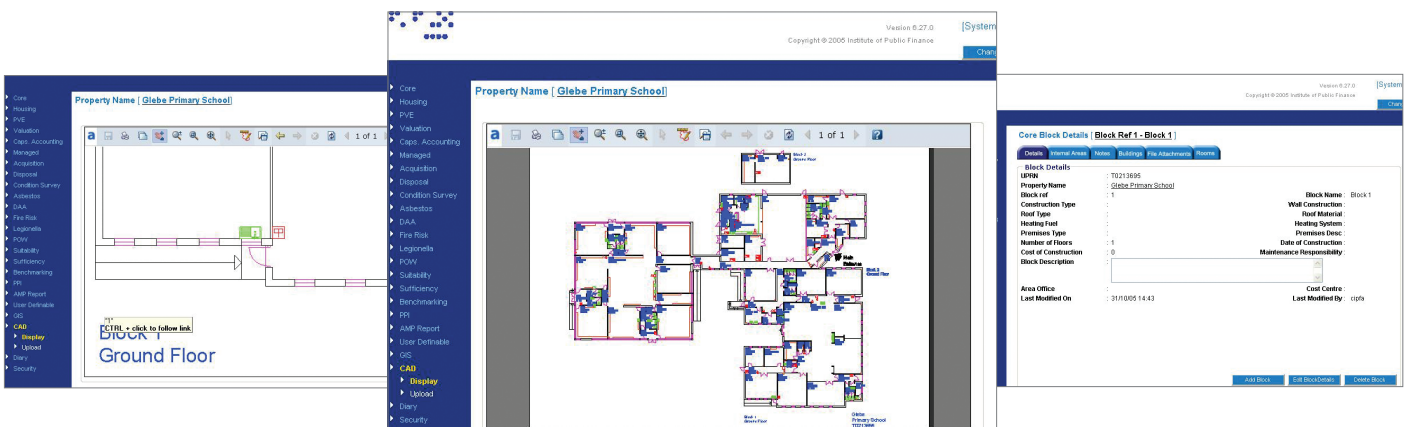
“A unique interface linking CAD plans with CIPFA AssetManager.NET”

Cad-Capture, in partnership with CIPFA, has developed a unique interface CIPFALink™ for users of CIPFA AssetManager.NET who wish to integrate CAD floor plans with the system. CIPFALink™ enhances the functionality and usefulness of the system and saves time populating and maintaining databases. CIPFALink™ has been certified by CIPFA for both SQL and .NET versions of the software.

Intelligent CAD files produced using Cad-Capture's AssetCapture solution are automatically hyperlinked so that information within the Asset Manager database can be accessed by simply clicking on a geographical object in the drawing.

Also, users working in any AssetManager.NET module can view related intelligent CAD files easily by clicking on the 'View Drawing' button. The intelligent CAD files may be either AutoCAD DWG or DWF format.

Furthermore CIPFALink™ seamlessly generates site, block and room data information files so that property records can be populated automatically from the intelligent CAD files with minimal input from the user.



## About Cad-Capture

Cad-Capture provides a complete range of solutions enabling organisations to capture and manage their engineering documents, drawings and data.

The fusion of specialist document conversion and data services with many years experience in systems implementation and application hosting makes it possible for Cad-Capture to provide truly effective solutions.

When considering document, content and data management projects, customers can be confident that Cad-Capture will provide the best available solution.

Founded in 1987, Cad-Capture has evolved as one of the longest established and most experienced companies in its field.

