



# CaptureLink™ for MicroStation

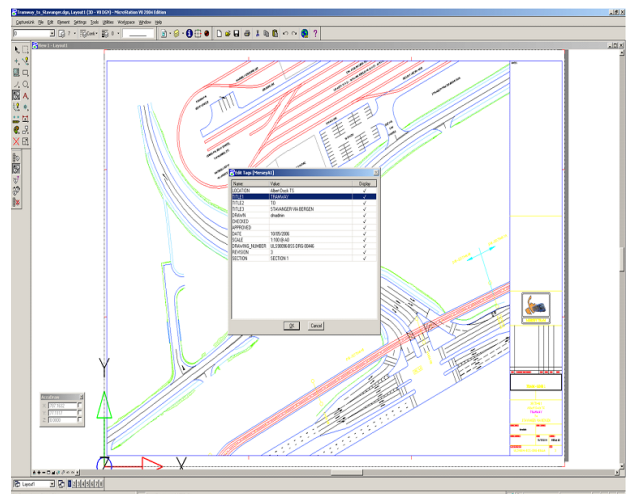
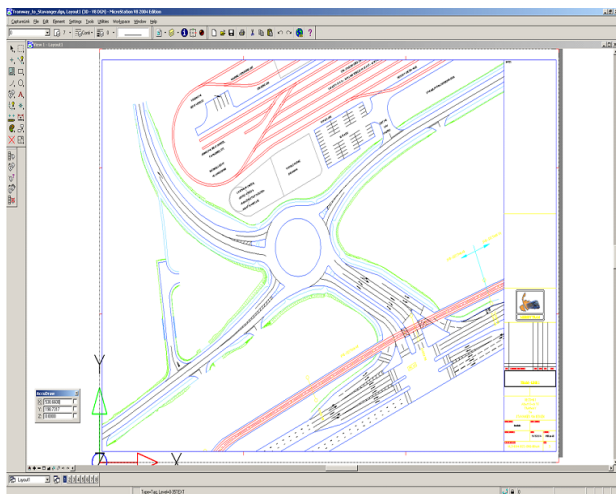
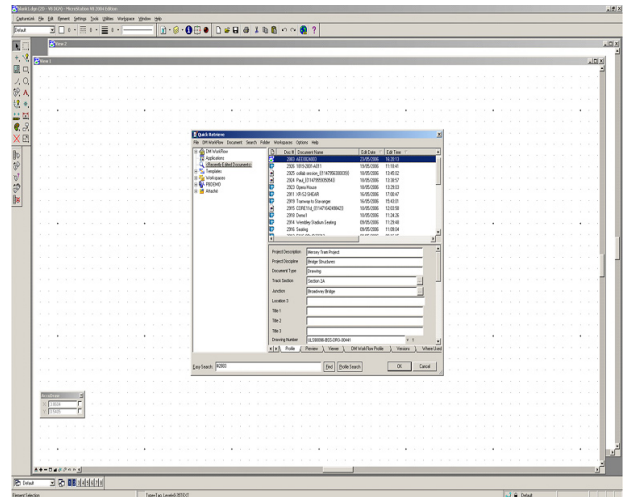
## Drawing Management

CaptureLink for MicroStation extends Open Text's eDOCS DM (formerly Hummingbird Enterprise™ - DM) portfolio of desktop clients by enabling drawings and their content, including, e.g. symbols and reference files, to be accessed and managed direct from Bentley's popular CAD authoring application, facilitating better decision making and improved productivity.

Advanced functionality includes the ability to automatically populate and update drawing title block attributes with those residing in DM for efficient profiling and minimal human error. This facility is bi-directional, enabling title block attributes to be 'pushed' to DM facilitating, e.g. the bulk upload of drawings.

Specific versions of a drawing residing in DM can be inserted as a reference to a drawing. Version integrity is maintained with the ability to insert, e.g. latest and published versions.

CaptureLink for MicroStation also provides full text search capabilities, enabling drawings to be recovered alongside other documents residing in DM from a single federated search.



## About Cad-Capture

Cad-Capture provides a complete range of solutions enabling organisations to capture and manage their documents and data.

The fusion of specialist document conversion and data services with many years experience in systems implementation and application hosting makes it possible for Cad-Capture to provide truly effective solutions.

When considering document, content and data management projects, customers can be confident that Cad-Capture will provide the best available solution.

Founded in 1987, Cad-Capture has evolved as one of the longest established and most experienced companies in its field.

**CaptureLink™ - SUPPORT INFORMATION**

Open Text eDOCS DM 5.1.0.5, 5.2, 5.2.1, 6.04 and 6.05

Bentley MicroStation V8 and XM

Guaranteed to support future versions on eDOCS DM and Bentley MicroStation\*

\*Subject to CaptureLink for MicroStation Maintenance and Support Agreement